



# Newsletter

The White Hills Park Trust

Issue 249 - 5th June 2020

## A new half term

It seems strange to welcome you back to a new half term given that the daily experience for most of our students will not have changed much. Nevertheless, during the final part of the school year, we are moving into a new phase, as I'm sure you are aware.

In the Newsletter immediately before half term, I wrote about our provisional plans for the wider reopening of our school sites, but stressed that we still awaited more information and guidance. This duly came during half term week, and we are making our plans in the light of this. Although everything remains provisional, we now expect that between now and the end of the school year that we will be operating on the following basis:

- ◇ For the very large majority of our students, the main model of curriculum will continue to be online and remote learning. We will make sure that we continue to provide the same level of work for students in Year 7, 8 and 9 as we were doing before half term. We are very conscious that it now seems likely that they will not be returning to school before the end of term, and so we will do anything we can to ensure that learning continues despite the challenges they face. We will also continue to provide pastoral support wherever we can – if there are particular issues and concerns, please let us know.
- ◇ As you know, our schools have not been closed but have remained open for specific groups of students, including the children of key workers. This provision will continue – we know how important it is to provide this support for families at the moment.
- ◇ In line with the government's intentions, we will be providing some face to face support for Year 10 and Year 12 students. This will be limited so that no more than one quarter of eligible students attend on the same day, and that we operate safe practices, including maintaining 2m distancing. The precise model for opening, including the date of lessons, will differ slightly between schools. Bramcote College will be accommodating Year 12 as well as Year 10 students and the physical layout of each school is also taken into account. If you are the parent of a Year 10 or Year 12 student, you will be contacted by the school to let you know the date and time that they should attend.

It is important to stress that the main model of curriculum delivery for Year 10 and Year 12 students remains online and remote learning, and the purpose of the face to face sessions is to supplement and support this.

We don't underestimate the challenges that this period has placed on families, and the risks it brings to our students' progress, which we have all worked so hard to support over the years. We will work with you to provide whatever support we can. I would like to pay tribute to the leaders and staff of both of our schools, who continue to work tirelessly to support students in these challenging times.

*Paul Heery*  
Chief Executive Officer

## Follow us Online



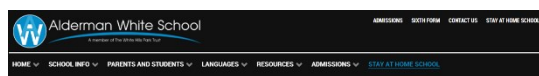
Alderman White School  
Bramcote College  
Bramcote College Sixth Form



AldermanWhite  
BramcoteColl  
BC6F WHPTrust

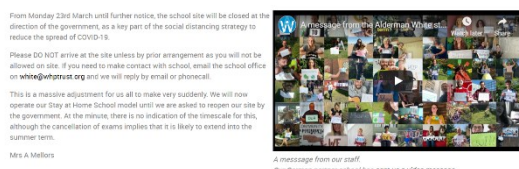


AldermanWhite\_School  
BramcoteCollege  
BramcoteCollegeSixthForm



Alderman White:  
'Stay at Home School'

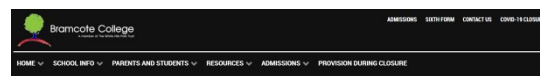
### Alderman White Stay at Home School



### Stay at Home School - Our Model

We have to build a new model and ways of operating very quickly. Many of our previous structures and requirements are no longer in place. The Chinese word for 'crisis' (危机) is composed of two Chinese characters signifying 'danger' and 'opportunity' respectively.

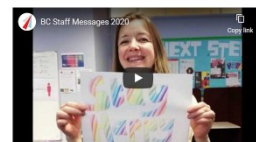
[View our model](#)



Please see below for key information during this period of school closure.  
Scroll down or use the links below to jump to a specific section:

- Contacting Us
- Keyworker Information
- Key Stage 3 Resources and Things to Do
- Key Stage 4 Resources and Things to Do
- Key Stage 5 Information
- Guides, Instructions and Resources
- Safeguarding
- Online Safety
- Letters and Communications to Parents

See our [Exams page](#) for information regarding the cancellation of examinations this summer.



### Key Worker Information

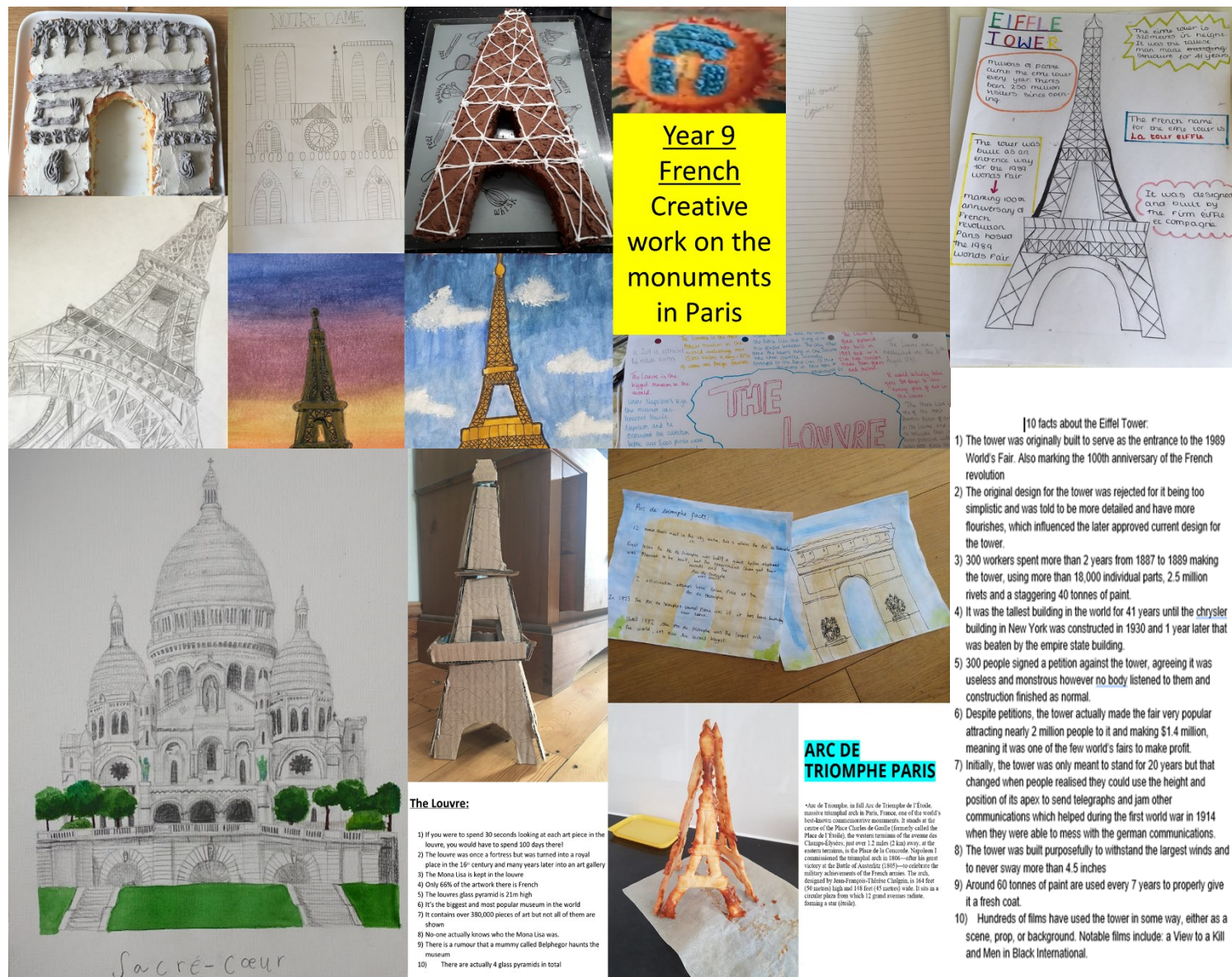
Our school is closed. Please DO NOT attempt to attend our site unless we have given you prior permission and there is absolutely no other alternative for your children.  
Minimising transmission of COVID-19 is our priority, and in light of the recent Government advice about social distancing, it is strongly advised that if there is any way for a child to be at home and not in school, this is the best way to proceed in order to keep children, families and staff safe.  
If you completed the online form and now no longer require school provision, please email [bramcote@whptrust.org](mailto:bramcote@whptrust.org) ASAP. Thank you to those that already have been in touch having made alternative arrangements.

Bramcote College:  
Information and  
Resources



## Monuments in Paris by Alderman White School

Some really inspiring pieces of Year 9 French homework on 'Monuments in Paris' completed as part of their choice of activities for Mental Health Awareness Week. All have been awarded INSPIRE points for their efforts. Great work, well done all!



## 5 facts about the Notre Dame

- The cathedral contains one of the oldest surviving wood timber frames in Paris, involving around 52 acres of trees that were cut down in the 12th century. Each beam is made from an individual tree. For this reason, the lattice of historic woodwork is nicknamed "the Forest".
- In 1793, in the midst of the French Revolution, 28 statues of biblical kings in the cathedral were pulled down with ropes and decapitated by a mob. It wasn't until 1977 that the heads of 21 of these kings were rediscovered during work on the basement of the French Bank of Foreign Trade. Now they're at the nearby Musée de Cluny.
- During the French revolution, the cathedral, like other churches around France, was transformed in the late 18th century from a Christian space and rededicated to the new Cult of Reason. All 20 of its bells—except the colossal 1681 bourdon called Emmanuel—were removed and melted down to make cannons.



- If you look at a photo of the cathedral from before the fire, you'll see a rooster on top of the spire (which sadly collapsed during the fire). This rooster was not a purely decorative bird. In 1935, three tiny relics—an alleged piece of the Crown of Thorns and some bits of Saint Denis and Saint Genevieve—were placed in the rooster's beak. The city's patron saint, Saint Genevieve, was secured inside the metal bird's body. The idea, the story goes, was to create a sort of spiritual lightning rod to protect the parishioners within.
- The Notre-Dame organ involves almost 800 pipes, located in the choir loft. In the 18th century played with five keyboards, making it the biggest pipe organ in France (although some claim that Saint-Eustache has a larger one). While there are some stashes on the wood of the organ loft—damage from the French Revolution, which the fleur-de-lis was carved off—it was restored in 2013 to mark the 850th anniversary of the cathedral.



# Sacré-Cœur

Sacré-cœur is a roman catholic church dedicated to the sacred heart of jesus in paris. the church stands at the summit of the hill, moreover, the highest point in the city. SACRÉ-CŒUR is above all a religious catholic building, known by its perpetual adoration of the holy eucharist since 1875, and it also seen as a double monument, political and cultural, kept as a national shrine for the welfare of France in the 1870 franco-prussian war and for the 1918-1919 paris commune of 1871 covering its mass religious neighborhood and an emblem of conservative movement, finally dedicated to the SACRED HEART of jesus which was an increasingly popular devotion since visions of saint margaret mary also came in paris.



- It was already a place of worship long before its consecration
- It is the second most visited church - 100 millions more than 10 million visitors per year
- It has a stunning architectural style. Both the exterior and interior architecture of the Sacre-Coeur are in Roman-Byzantine style you will love the light and the details of this masterpiece
- It was financed by the Parisians
- It has one of the most beautiful things
- One of the most impressive things about this church is its whiteness - you can see it from a distance due to its shiny look But Another thing about this specific stone for the construction of the Sacre-Coeur: The white stone came from the quarries in Occupancy in the Seine-et-Marne (near department)



## The Eiffel Tower

Paris, France



The Eiffel tower was the tallest tower in the world until the completion of the Chrysler Building in New York in 1930.



- During cold weather it shrinks about six inches.
- More than 250 million people have visited the Eiffel Tower
- Repainting the tower, which happens every seven years, requires 60 tonnes of paint



1. The Eiffel tower is 324 metres tall.
2. It is the tallest structure in Paris.
3. It was built from 1887 to 1889, it opened 131 years ago.
4. There are 1710 steps in the Eiffel tower.
5. The Eiffel tower grows around 25cm taller in summer because of heat expansion.
6. It weighs 10,100 tonnes.
7. Around seven million people visit the Eiffel tower in a year.
8. It is one of the most visited paid for monuments in the world.
9. The tower is repainted every seven years, using 60 tonnes of paint.
10. It was designed by Gustav Eiffel.



The Eiffel tower



Not to be outdone, Year 7 have done their own fantastic models and pictures on the monuments of Paris.

These were all a part of creative tasks set in support of Mental Health Awareness Week focussing on kindness and getting away from computer screens during 'stay at home' school.

You can view the video we made, 'What Kindness means at Alderman White', on our [YouTube channel](#).

Mrs M Holling

## Year 7 French

### Creative work on the monuments in Paris

Paris Monument The Eiffel Tower

By Logan Tooby

I made the Eiffel Tower out of pasta. Below is my step by step.

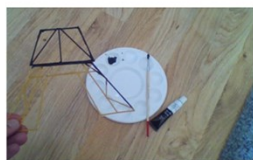
**STEP ONE:** I made a template of the Eiffel Tower.



**STEP TWO:** I carefully cut the pasta into pieces and placed them onto the template and glued the pieces together.



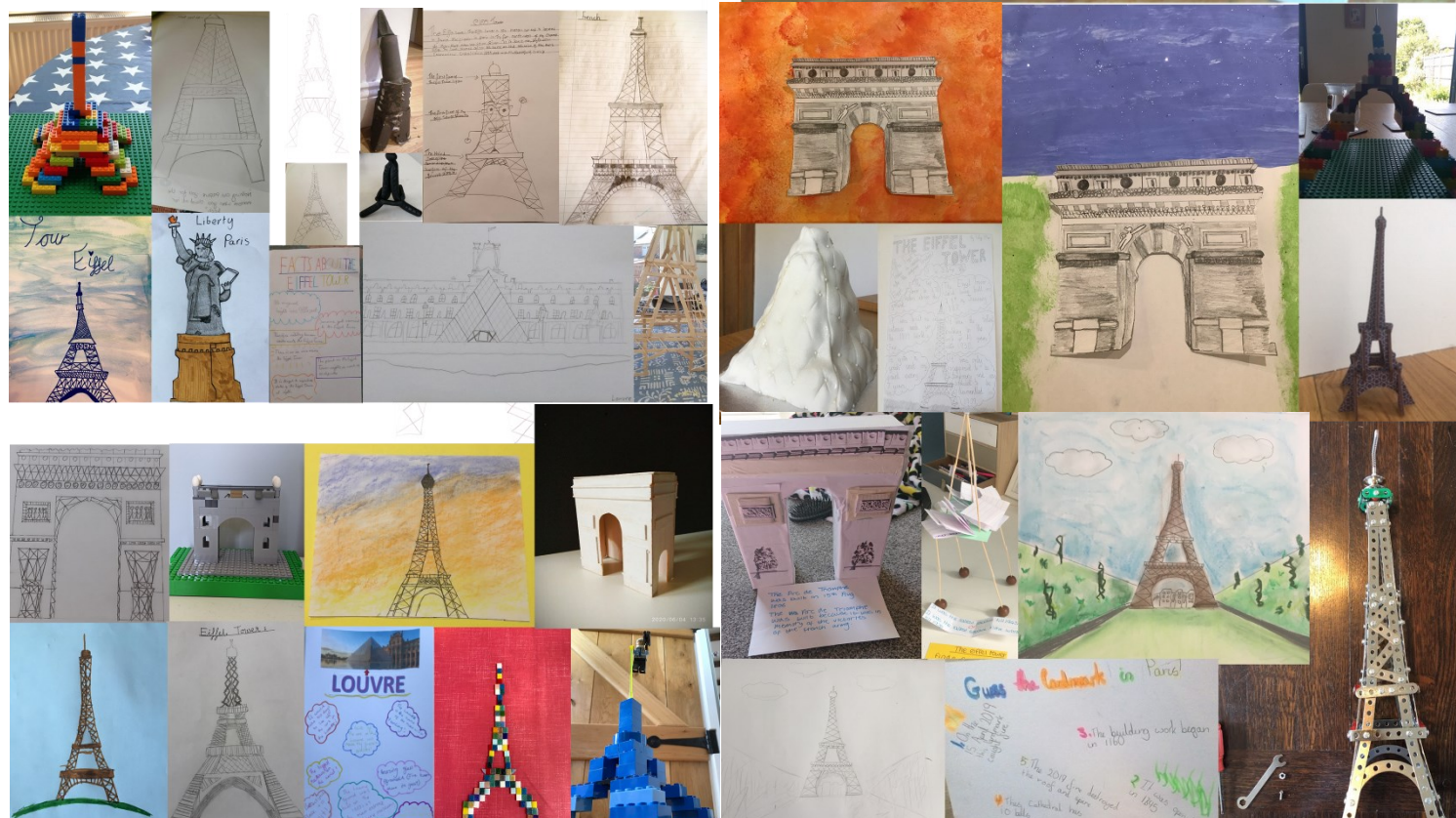
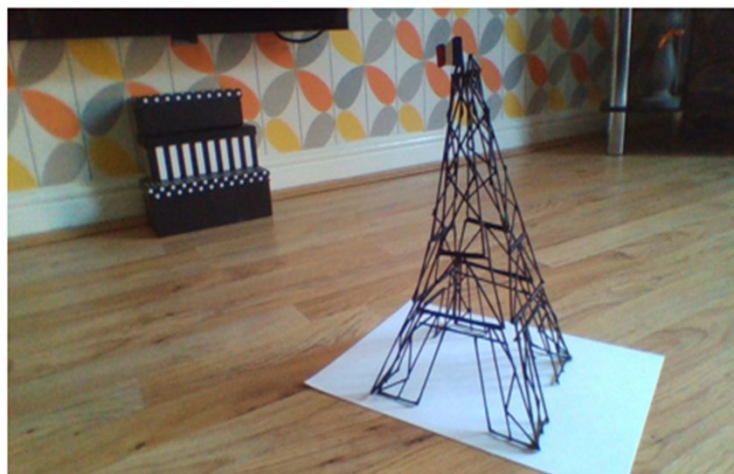
**STEP THREE:** I then had four templates completed out of pasta, glued them all together then painted the pasta black once glue dried.



**STEP FOUR:** Once the paint had dried on all four pieces, I then made a little French flag which would go on the top.



**STEP FIVE:** I glued all four pieces together, glued the French flag on the top and it made a 3D shape of the Eiffel Tower. This has taken me 4 days to complete.



## Blackout Tuesday

On Tuesday, music and entertainment institutions took part in Blackout Tuesday as a response to the death of George Floyd in the USA, and as a peaceful protest against racism and tolerance of racism. To show support of the international fight against racism, the Alderman White Swing Band joined musicians around the world in not playing their instruments.

Watch on our [YouTube channel](#).

[aldermanwhite.school/youtube](#)

Mrs M Holling & Mr C Wedgeworth

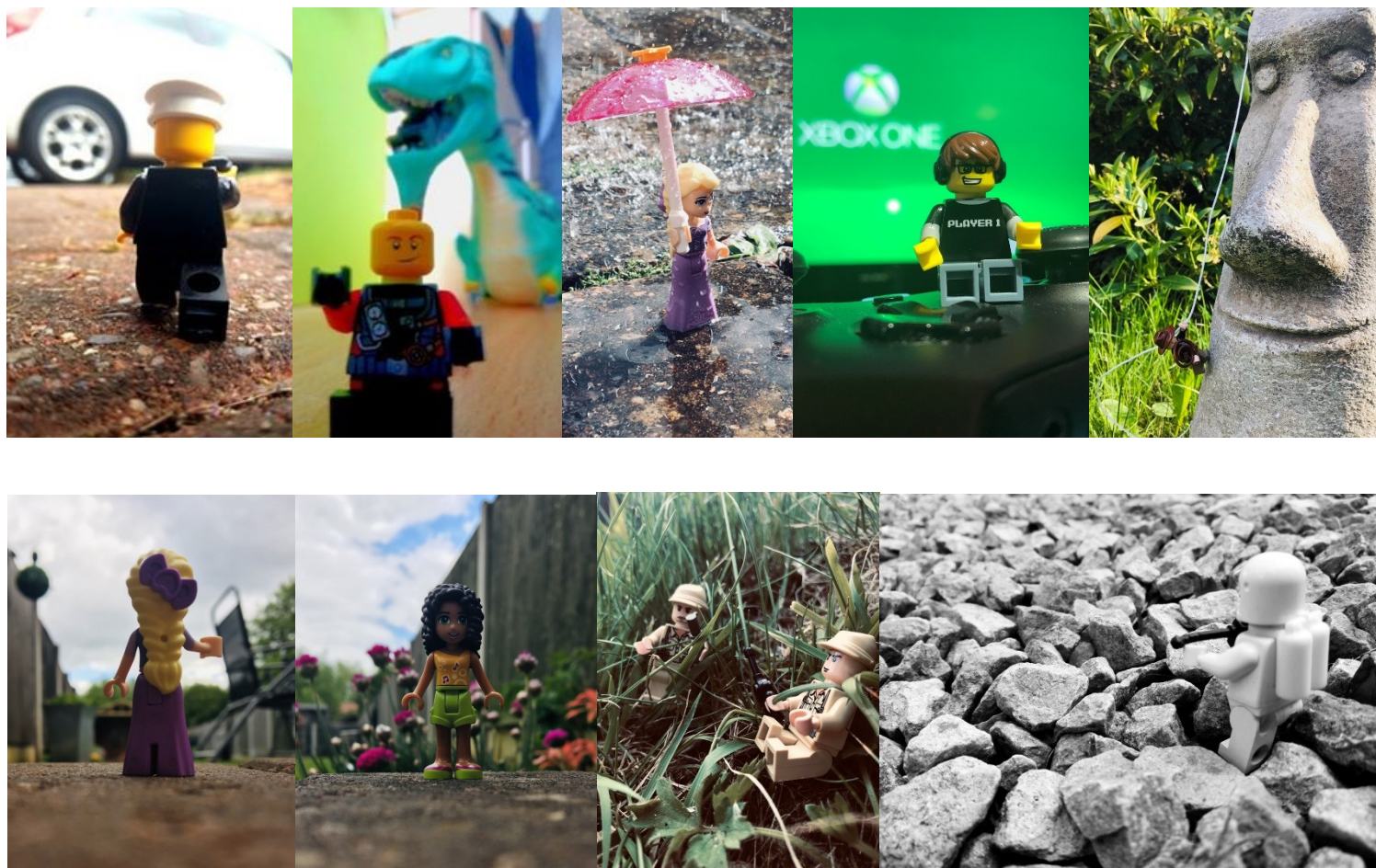




## Legography at Bramcote College

Some amazing 'Legography' (Lego Photography) work, sent in by the Year 9 Photographers at Bramcote College.

Miss J Cooper



## Vacancies

We currently have the following vacancies across the Trust:



### Trust Governance Manager

The White Hills Park Trust

Closing date for applications: **10am, Monday 15th June**

Work closely with the Chief Executive Officer, Trust Board and Local Governing Bodies to lead governance functions, enabling the Trust to fulfil its reporting responsibilities and to be governed effectively & compliantly.



### Site Team Officer

Based at Alderman White School

Closing date for applications: **9am, Monday 8th June**

We are seeking to appoint a highly motivated and pro-active individual with energy and vision to join the site team, responsible for the upkeep, maintenance, security and facilities management of the school's premises.

See [whptrust.org/vacancies](http://whptrust.org/vacancies) for more information and for details on how to apply.



Alderman White School  
A member of The White Hills Park Trust



Bramcote College  
A member of The White Hills Park Trust



bramcote college  
sixth form  
A member of The White Hills Park Trust